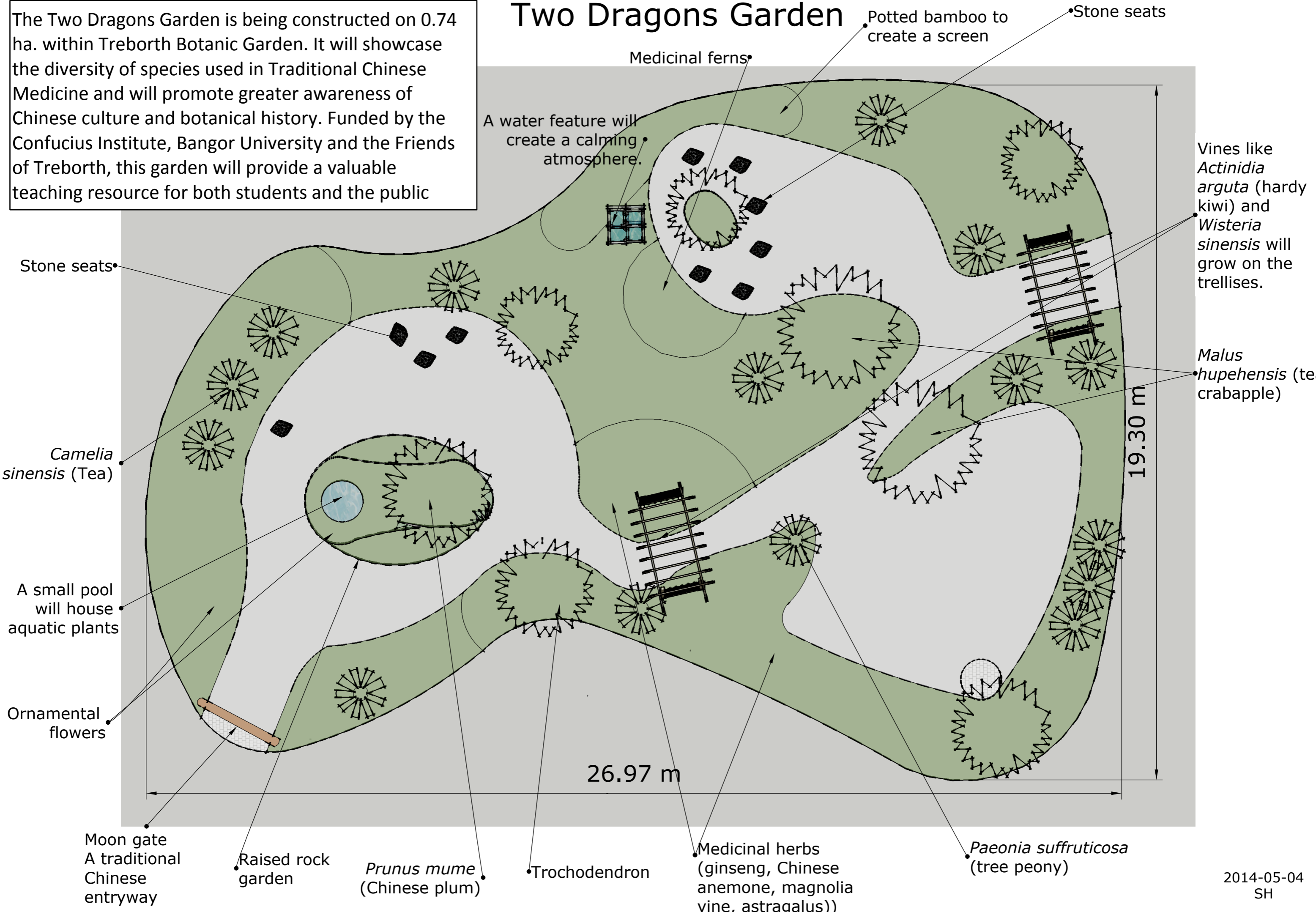


The Two Dragons Garden is being constructed on 0.74 ha. within Treborth Botanic Garden. It will showcase the diversity of species used in Traditional Chinese Medicine and will promote greater awareness of Chinese culture and botanical history. Funded by the Confucius Institute, Bangor University and the Friends of Treborth, this garden will provide a valuable teaching resource for both students and the public

# Two Dragons Garden



Potted bamboo to create a screen  
Stone seats

Medicinal ferns

A water feature will create a calming atmosphere.

Vines like *Actinidia arguta* (hardy kiwi) and *Wisteria sinensis* will grow on the trellises.

*Malus hupehensis* (tea crabapple)

19.30 m

26.97 m

Stone seats

*Camelia sinensis* (Tea)

A small pool will house aquatic plants

Ornamental flowers

Moon gate  
A traditional Chinese entryway

Raised rock garden

*Prunus mume*  
(Chinese plum)

Trochodendron

Medicinal herbs  
(ginseng, Chinese anemone, magnolia vine, astragalus)

*Paeonia suffruticosa*  
(tree peony)